

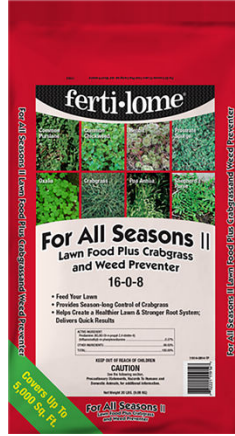
OUR SIMPLE 5-STEP PROGRAM

THE EASY WAY TO A GREAT LOOKING YARD

Step One | April 10th – May 10th

Crabgrass Preventer with Slow Release Nitrogen Fertilizer

Combined with this fertilizer, this pre-emergent herbicide will prevent annual grassy weeds such as foxtail and crabgrass. All spring raking or aerating should be done prior to applying. This product is intended for use on established lawns. Do not apply this to areas where spring seeding is necessary or where grass seed from the previous fall has not been mowed three times. Water in with 1/2" of water within 24 hours of application.



Step Two | May 15th – June 15th

Controlling Weeds With Weed-Out With Trimec Herbicide

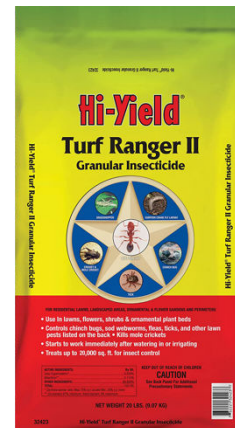
If daytime temperatures exceed 85 degrees, apply in late evening. Wait two to three days before mowing for re-growth of the weeds. A light misting with water before application ensures the granules adhere to the weed's foliage. Do not water or mow for 24-48 hours after application. If weeds are not a problem at this time, apply the premium lawn food now and reserve the weed and feed for fall.



Step Three | July 1st – July 15th

Controlling Insects

The granulated insecticide contains Deltamethrin which controls surface nuisance insects such as crickets, ticks, fleas, and ants. Leave on surface for at least 6 hours then thoroughly water in within 24 hours of application.



Step Four | August 15th – October 15th

Apply Lanoha's Premium Lawn Fertilizer

This period is ideal for seeding, overseeding, or lawn renovation. Aeration prior to seeding is important. The slow release nutrients will give a gradual feeding to the lawn at this time. The iron and sulfur make the turf green after summer season. If any fertilizer gets on concrete, brush off with a broom as iron may stain.



Step Five | October 15th – November 15th

Apply Lanoha's Premium Lawn Fertilizer

Apply a second feeding of our premium 25-0-10 fertilizer as a winterizer, and it will give the turf the needed nutrients to survive the rigors of winter. Water in with at least 1/2" of moisture within the first 24 hours.

